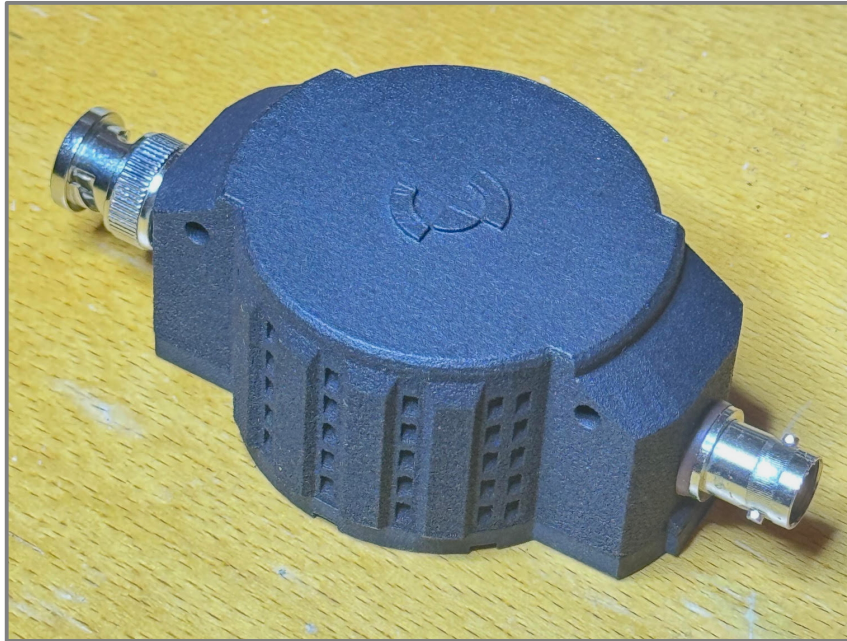


ELECRAFT BL3 BALUN



(Actual Size)

- **PROTECTS YOU AND YOUR GEAR IN THE FIELD:** The rugged, lightweight BL3 is targeted at portable operation up to 100 W where RF on a coax shield can cause radio or computer interference, as well as shock hazard.
- **RAPID DEPLOYMENT:** The BL3's BNC connectors provide quick connect/disconnect. They can also be used directly with whips like the Elecraft AX3 and AX4, as well as with other antennas typical of camping, RV, POTA and general outdoor station setups.
- **HIGH ISOLATION ON THE HIGH BANDS:** The BL3 provides 30 dB of isolation at 14 MHz, gradually rising to 40 dB or higher from 21 to 50 MHz. This high degree of isolation can solve many field RFI problems when using high power, short coax cables, and compromise ground systems.
- **TAKES THE HEAT:** With its louvered ventilation and stacked FT140-61 cores, the BL3 can safely handle most unmatched antennas at up to 100 W CW/SSB, 50 W data. (With non-resonant whips, per-band tuned radials will maximize power-handling capability. A wide-range ATU such as those available for all Elecraft transceivers is also recommended. See BL3 Owner's Manual.)
- **VERSATILE MOUNTING:** When used on a flat surface with an Elecraft AX4, the BL3 will directly attach to the whip base and rest on the same surface. The bottom side of the BL3 features 1/4-20 threads for other mounting methods.